



Givaudan<sup>®</sup>

**PRODUCT LIST**

Product Code	Product Name	Legal Status	End Use
PL-0001	ALMOND CREAMY FLV	NI	CONF, DAIRY
ID28464	ALMOND SWEET FLV	A	BAK, DAIRY
ID28465	AMERICAN ICE CREAM NARDA FLV	NI	BAK ,DAIRY, PHAR
PL-0002	ANISEED FLV O/S	NI	BEV
ID28467	ANISEED NATURAL FLV	NI	PHAR
ID28250	APPLE ID 28250	A	BAK, CONF
PL-0003	APPLE JUICY FLV	NI	BEV
PL-0087	GREEN APPLE FRESH FLV	NI	BEV
ID28468	APRICOT FLV	A	BAK, PHAR
PL-0005	BANANA CLASSIC FLV	NI	BAK, BEV, CONF, DAIRY
ID28469	BANANA FLV	A	BAK, CONF, PHAR
SW-0002	BANANA YUMM	A	BAK, BEV
PL-0006	BLACKBERRY FLV	NI	DAIRY
PL-0008	BLUEBERRY FLV O/S	A	GUMS
PL-0096	BIRYANI FLV O/S	NI	SAV
ID20158	BLACKCURRANT ID 20158 FLV	A	CONF, DAIRY, PHAR
PL-0007	BLACKCURRANT FLV	NI	BEV, CONF, DAIRY
ID22068	B.T.M. ID 22068	A	PHAR
PL-0010	BUTTER CLASSIC FLV O/S	NI	BAK, CONF
ID27401	BUTTER CONC. ID 27401 O/S	NI	CONF, PHAR
PL-0011	BUTTER EMULSION CONC. FLV O/S	NI	BAK
PL-0012	BUTTER PREMIUM FLV O/S	NI	BAK, CONF
ID28475	BUTTER SPECIAL FLV	NI	BAK
ID26524	BUTTER SUPER FLV O/S	NI	BAK
PL-0013	BUTTER SWEET FLV O/S	A	BAK
SW-0004	UTTERLY BUTTERLY O/S	NI	BAK, HBC
PL-0014	BUTTERSCOTCH CLASSIC FLV O/S	NI	BAK, CONF, DAIRY
ID20358	BUTTERSCOTCH ID 20358 FLV	-	BAK, CONF, DAIRY
PL-0015	BUTTERSCOTCH PREMIUM FLV O/S	A	DAIRY
ID20353	BUTTERSCOTCH SPECIAL FLV	A	BAK, CONF, DAIRY
ID20186	BUTTER TOFFEE ID 20186 FLV	A	CONF, PHAR
ID20379	BUTARDOL CONC NARDA FLV	NI	BAK
ID27374	BUTARDOL ID 27374	A	BAK
SWP-004	BUBBLE WONDER	NI	PHAR
ID28478	CARAMEL FLV	A	CONF, DAIRY, PHAR
SW-0006	CARAMELLO	NI	HBC, DAIRY
SW-0045	CARAMEL TOFFEE FLV	NI	HBC, PHAR
ID28480	CARDAMOM NARDA CONC.FLV	-	AB, BAK, CONF, DAIRY, PHAR
ID28479	CARDAMOM NARDA FLV	-	BAK, CONF, DAIRY, PHAR
ID20248	CARDAMOM SPECIAL FLV	-	BAK, CONF, DAIRY, PHAR
PL-0016	CARDAMOM SWEET FLV	NI	BAK, CONF, DAIRY

Givaudan®

Product Code	Product Name	Legal Status	End Use
PL-0017	CARDAMOM SWEET SPICE FLV	NI	BEV, CONF
ID20413	CASHEW FLV	NI	BAK, BEV
SW-0044	CHEESE	NI	BAK, SAV, SNACKS
SS-0003	CHEESE CHEDDAR FLV O/S	NI	SAV
SS-0004	CHEESE CHEDDAR FLV O/S	NI	DAIRY, SAV
ID27829	CHEESE CREAMY FLV	A	BAK
ID27561	CHEEZEX PLUS ID 27561 O/S	A	BAK
PL-0093	WHEY FLV O/S	NI	BAK, SAV, SNACKS
ID28481	CHERRY FLV	A	CONF, PHAR
SWP-005	CHERRY RED FLV	NI	BEV, DAIRY, PHAR
PL-0097	RED CHILLI FLV O/S	N	HBC, SAV
PL-0019	CHOCO FLV	NI	BAK, BEV, CEREAL
ID20496	CHOCOLATE BOURBON FLV	-	BAK, CONF, DAIRY, PHAR
PL-0020	CHOCOLATE CLASSIC FLV	NI	BAK, BEV, DAIRY
PL-0098	CHOCOLATE DARK FLV	NI	BEV
PL-0099	CHOCOLATE DARK RICH FLV	NI	BEV, CONF
PL-0023	CHOCOLATE FANTASY O/S	A	CONF, DAIRY
ID28536	CHOCOLATE FLV	A	BAK, CONF, DAIRY, PHAR
PL-0024	CHOCOLATE MILK FLV O/S	A	BAK, CONF
PL-0025	CHOCOLATE PREMIUM FLV	NI	BAK, BEV, CONF, DAIRY, PHAR
PL-0026	CHOCO-MAX FLV	NI	BAK, CONF
ID27621	REAL CHOCOLATE ID 27621	A	BAK, CONF, DAIRY
SW-0008	SWISS CHOCÓ BLEND	NI	BAK, HBC
ID25360	CLEAR LEMON ID 25360 FLV	NI	AB, BEV
ID26161	CLEAR LEMON ID 26161 FLV	NI	BEV
ID28484	COCONUT FLV	A	BAK, CONF
ID20844	COCONUT ID 20844	-	BAK
ID21023	COCONUT ID 21023 FLV	A	BAK, CONF
PL-0100	COCONUT MILK FLV O/S	A	CONF
SW-0011	KOPRA	A	HBC
PL-0115	KOPRA PREMIUM FLV O/S	A	BAK, SAV
PL-0116	COFFEE SWEET FLV	NI	BEV, CONF, DAIRY
SW-0012	MOCHA	NI	BAK, HBC
ID20700	COLA BOOSTER ID 20700 MJ FLV	N	BEV
PL-0094	COLA FLV	NI	BEV
ID20334	COLA ID 20334 FLV	A	BEV, CONF
ID20539	COLA ID 20539 FLV	A	BEV
ID20540	COLA ID 20540 FLV	A	BEV
ID20610	COLA ID 20610	-	BEV
ID20621	COLA ID 20621 FLV	N	BEV
PL-0102	CRANBERRY FLV	NI	AB, PHAR

Product Code	Product Name	Legal Status	End Use
PL-0103	CREAM CLASSIC FLV	NI	BAK, BEV
SW-0014	CREAM FLV	NI	BAK, HBC
ID21983	CREAM FLV	A	CONF
ID28488	CUMIN D 10159 FLV O/S	NI	BAK
PL-0032	CUSTARD APPLE FLV	NI	DAIRY
NN11622	DESI GHEE FLV O/S	Ni	BAK
SS-0010	GHEE FLV O/S	A	SAV
ID21244	FRUIT COCKTAIL ID 21244 FLV	A	PHAR
ID28497	FRUIT FLV MIXED CONC FFM	A	AB, PHAR
ID20181	FRUIT FLV MIXED ID 20181	A	PHAR
ID21533	FRUIT FLV MIXED ID 21533	A	BAK, BEV, PHAR
PL-0033	FRUIT MIX ENERGY FLV	NI	BEV
PL-0095	FRUIT PUNCH	NI	BEV, PHAR
PL-0104	FRUITY JUICY FLV O/S	A	DAIRY, GUMS
PL-0035	FRUITY SWEET VIMTO FLV	NI	BEV, PHAR
SWP-009	GRENADINE	NI	BEV, PHAR
PL-0036	GUAVA FLV	A	BEV, HBC
PL-0037	HAZELNUT FLV O/S	NI	BAK, CONF, DAIRY
PL-0105	HONEY CLASSIC FLV	NI	BEV, DAIRY, HBC
SW-0042	HONEY FLV O/S	NI	BAK, BEV, DAIRY
ID28500	HONEY FLV	A	BAK, PHAR
PL-0039	KHUS FLV	NI	BEV
ID28501	KHUS FLV	NI	BEV
SW-0039	ITALIAN LEMON O/S	N	BAK
PL-0040	LEMON FRESH FLV O/S	NI	CONF
ID20543	LEMON ID 20543 FLV	NI	BAK, BEV, SAV
ID20746	LEMON LIME ID 20746 FLV	NI	BEV
ID28504	LEMON LIME V 5805 FLV	NI	AB, BEV
ID21541	LEMON NARDA FLV	NI	BEV, PHAR
ID21190	LEMON NO.1 FLV	NI	BAK, PHAR
PL-0041	LEMON WASH XX	N	BEV
PL-0042	LEMONGRASS FLV	N	BEV
PL-0043	LIME CLASSIC FLV O/S	NI	CONF, SAV
PL-0044	LIME FRESH PREMIUM FLV O/S	NI	CONF
PL-0106	NIMBU PANI	NI	BEV
PL-0090	LYCHEE FLV	NI	CONF, DAIRY
ID28746	LYCHEE ID 28746	A	BEV, CONF
PL-0046	LYCHEE RIPE FLV	NI	BEV, CONF, PHAR
ID21536	MALT FLV	A	DAIRY
SWP-007	FANTASY MASKING	NI	BEV, HBC, PHAR
SW-0017	JUICY MANGO	A	HBC, PHAR

Givaudan®

Product Code	Product Name	Legal Status	End Use
📄 PL-0047	MANGO CLASSIC FLV	NI	BEV, CONF, DAIRY
📄 PL-0048	MANGO CREAM FLV	A	CONF
QL89285	MANGO PREMIUM FLV	NI	BEV, CONF, DAIRY
📄 PL-0049	MANGO SWEET FLV	A	BEV, CONF
SW-0018	KACHCHA AAM O/S	A	HBC, GUMS
ID28507	MANGO GREEN FLV	NI	BEV, CONF
📄 PL-0107	MANGO RAW PREMIUM FLV O/S	A	HBC
📄 PL-0051	MELON HONEYDEW FLV	NI	BEV
SW-0037	WATER MELON FRESH FLV O/S	NI	BEV, DAIRY, GUMS, HBC
ID27190	COND. MILK SUPER	A	BAK
ID25875	CONDENSED MILK FLV ID 25875	A	BAK, CONF, DAIRY
📄 PL-0052	MAWA FLV	A	BAK, CONF
* 📄 PL-0053	MILK BOILED FLV	NI	BAK, CONF
📄 PL-0054	MILK CLASSIC FLV	A	BAK
📄 PL-0055	MILK CONDENSED FLV	NI	BAK
* 📄 PL-0057	MILK CREAMY FLV	A	BAK
* 📄 PL-0058	MILK CRUMB FLV	NI	BAK
📄 PL-0059	MILK FRESH FLV	A	BAK, CONF
ID26454	MILK ID 26454 FLV	A	BAK, CONF
* 📄 PL-0060	MILK PREMIUM FLV	A	BAK
📄 PL-0061	MILK SWEET FLV	NI	BAK, CONF
ID22054	BLOOD ORANGE ID 22054 O/S	NI	CONF, PHAR
📄 PL-0062	ORANGE (NAGPUR) FLV	N	AB, BEV
📄 PL-0063	ORANGE FLV O/S	N	BEV, HBC
SW-0025	ORANGE FLORIDA O/S	A	BAK, CONF
ID28509	ORANGE FOUR FLV	A	PHAR
ID20439	ORANGE ID 20439 FLV	A	BEV, PHAR
📄 PL-0064	ORANGE JAFFA FLV O/S	NI	BAK, CONF
📄 PL-0065	ORANGE JUICY FLV	N	AB, BEV
📄 PL-0108	ORANGE JUICY PREMIUM FLV O/S	NI	CONF
ID20251	ORANGE NARDA FLV	A	BAK, BEV, PHAR
📄 PL-0067	ORANGE OIL CANDY O/S	NI	BAK, CONF
ID21534	ORANGE SWEET ID 21534 FLV	A	BAK, BEV, CONF, PHAR
ID25632	ORANGE SWEET ID 25632 FLV	A	BEV, PHAR
SW-0026	ORANGE VALENCIA O/S	A	BEV, GUMS, HBC
📄 PL-0109	ORANGE WASH FLV	-	BEV, PHAR
ID21195	SWEET ORANGE NO.1 FLV	NI	AB, BAK, PHAR
📄 PL-0069	PAPAYA FLV	NI	BEV, DAIRY, HBC
📄 PL-0070	PEACH CLASSIC FLV	NI	BEV, DAIRY, HBC
📄 PL-0110	PEACH JUICY FLV	NI	BEV, DAIRY, HBC
ID28510	PEACH NARDA	-	BAK

📄 New Introduction \* Contains proprietary Givaudan ingredients

Givaudan®

Product Code	Product Name	Legal Status	End Use
📌 PL-0111	PEANUT FLV	NI	BAK, CONF
📌 PL-0073	PEAR FLV	NI	BEV
SW-0022	ICY KOOL	NI	HBC, GUMS
ID28512	PEPPERMINT EXT.STRONG FLV	NI	CONF, PHAR
ID28517	PEPPERMINT TROOMINT FLV	NI	PHAR
SS-0008	PUDINA FLV	NI	CONF, SAV
ID20950	PINEAPPLE FANTASY	-	BAK
📌 PL-0074	PINEAPPLE FLV	A	BAK
📌 PL-0112	PINEAPPLE FRESH FLV	A	BAK, BEV
ID28514	PINEAPPLE NARDA	A	BAK
📌 PL-0076	PINEAPPLE RIPE FLV	NI	BAK, PHAR
ID20390	PINEAPPLE SUPER FLV	A	BAK, BEV, CONF, PHAR
ID28515	PINEAPPLE SWEET FLV	A	BAK, BEV, CONF, DAIRY, PHAR
📌 PL-0077	PISTACHIO FLV	A	BAK, DAIRY
ID27025	RABADI ID 27025	A	BAK, CONF
ID28519	RASPBERRY 249 FLV	NI	BAK, CONF, PHAR
SWP-013	RASPBERRY CLASSIC FLV	NI	PHAR
SWP-012	RASPBERRY PREMIUM FLV	NI	PHAR
ID28522	RASPBERRY SWEET FLV	NI	BAK, CONF, PHAR
📌 PL-0078	ROSE PETAL PREMIUM	NI	BAK, BEV, CONF, DAIRY
ID28524	ROSE WHITE SPECIAL FLV	NI	BEV, CONF, PHAR
📌 PL-0079	SAFFRON FLV	NI	BEV, DAIRY
📌 PL-0113	STRAWBERRY FANTASY	NI	BEV, DAIRY, PHAR
ID28530	STRAWBERRY FLV	A	BAK, DAIRY, PHAR
ID26418	STRAWBERRY ID 26418 FLV	A	BAK, CONF, PHAR
ID27260	STRAWBERRY ID 27260	A	BAK, BEV, CONF, DAIRY
📌 PL-0081	STRAWBERRY NICE O/S	NI	BAK, CONF, PHAR
📌 PL-0082	STRAWBERRY PREMIUM FLV	N	BEV, DAIRY
📌 PL-0083	TAMARIND CLASSIC FLV	NI	BEV, CONF
📌 PL-0114	TAMARIND PREMIUM FLV	A	BEV, CONF
SS-0018	TOMATO (COOKED) FLV OS	NI	SAV
SS-0017	TOMATO SUNDRIED FLV O/S	NI	SAV
ID26978	MILKY VANILLA FLV	NI	DAIRY
ID28537	VANILLA EXT STRONG FLV	A	AB, BAK, CONF, PHAR
ID27080	VANILLA ID 27080 FLV	A	BAK, DAIRY
ID25700	VANILLA NARDA FLV	A	BAK, DAIRY, PHAR
ID27406	VANILLA POWDER SUPREME	A	BAK
ID25701	VANILLA SPECIAL FLV	A	AB, BAK, DAIRY
ID28541	VANILLA SUPREME FLV	A	BAK
SW-0033	VANILLA X'LENCE	NI	BAK, DAIRY, HBC

📌 New Introduction    \* Contains proprietary Givaudan ingredients

Givaudan<sup>®</sup>

# Concentrates

Flavoured Concentrates (for Soft Drink Industry)

Product Code	Product Name	Legal Status
T-089684	COLA PASTE	-
ID20608	COLA PASTE ID 20608	-
ID28544	GINGER EMULSION 2114 N	NI
ID25859	LEMON LIME PASTE	NI
ID27603	ORANGE EMULSION ID 27603	A
ID28547	ORANGE P 585	A
ID28546	ORANGE P C	NI
ID28545	ORANGE P EXCEL	A
ID20151	ORANGE P ID 20151	A
ID26999	ORANGE T	A
ID28548	ORANGINA SPECIAL	NI
ID28549	PINEAPPLE EMULSION 3811	A

## Oils

Product Code	Product Name	End Use
ID28456	CARDAMOM OIL CONC. G.P.	BAK, PHAR
PL-0085	LEMON OIL FLV 20537 SPECIAL	BAK, CONF, PHAR
ID28460	ORANGE OIL SWEET	BEV ,CONF, DAIRY, PHAR

## Cloudifying Agent

Product Code	Product Name	Legal Status	End Use
ID26034	NARDA MIST	N	BEV

## Preservatives

Product Code	Product Name	Legal Status	End Use
ID28462	FOOD PRESERVATIVE LIQ NO.1	N	BEV, PHAR

Givaudan®

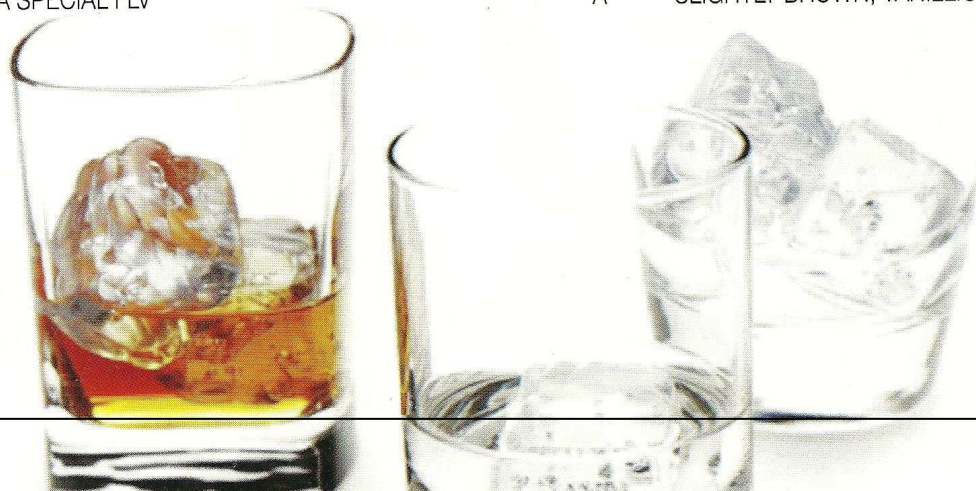
# Flavours for Alcoholic Beverages

Product Code	Product Name	Legal Status	Profile
<b>BRANDY</b>			
AL-0001	BRANDY BOURBON FLV	NI	RAISIN, COGNAC
ID25629	BRANDY CLASSIC FLV	A	VINOUS, MATURED
AL-0002	BRANDY PREMIUM FLV	NI	COGNAC, WOODY
AL-0003	BRANDY EXCELLENCE FLV	NI	FRUITY, FERMENTED
ID21702	BRANDY ID 21702 FLV	NI	GRAPE DARK, SKINNY, SOURISH
ID26926	BRANDY ID 26926	A	COGNAC, FRUITY, BOUQUET
AL-0004	BRANDY FLV	NI	RICH, SOURISH, GRAPE, COGNAC
<b>COGNAC</b>			
ID28489	BONIFICATEUR 0074 FLV	NI	GRAPE, MATURED, OAKY
ID20525	BRANDY ID 20525 FLV	A	FUSEL, GRAPE, RIPE
ID20321	COGNAC ID 20321 FLV	NI	
ID20526	COGNAC ID 20526 FLV (BONIFICATEUR)	A	DRY FRUITS, VINOUS COGNAC
AL-0005	COGNAC OIL SUBST	A	FRUITY, GRAPE, FRESH
AL-0006	COGNAC H TYPE	NI	
<b>GIN</b>			
ID28492	DRY GIN D 8091 FLV	NI	JUNIPER, HERBAL, SLIGHTLY CITRUSY
ID20314	GIN CLASSIC FLV	N	JUNIPER, CITRUSY
ID28912	GIN FLV	N	SWEET, SPICY, CORIANDER
ID21601	GIN ID 21601 FLV	N	CORIANDER, SPEARMINT
<b>RUM</b>			
<b>DARK RUM</b>			
ID28525	RUM FLV 0604	NI	FRUITY, BANANA, RAISIN, SPICY
AL-0007	RUM FRUITY	NI	FRUITY, RIPE, CANNED
AL-0008	RUM SMOKY	NI	SMOKY, FRUITY
ID20461	VINTAGE DARK RUM	NI	ALCOHOLIC, FRUITY, SWEET, RUM ETHER
<b>RUM JAMAICAN</b>			
AL-0009	RUM JAMAICA CLASSIC	NI	FRUITY, RIPE, POPULAR INDIAN
ID20414	RUM JAMAICAN FLV	NI	RUMMY, FRUITY
<b>WHITE RUM</b>			
AL-0010	RUM WHITE FLV	NI	
AL-0011	RUM WHITE PREMIUM FLV	NI	SPICY
<b>VODKA</b>			
AL-0040	VODKA FLV	NI	CREAMY, FRUITY
AL-0013	VODKA CLASSIC	NI	SMOOTH

Givaudan®



Product Code	Product Name	Legal Status	Profile
<b>WHISKY</b>			
<b>REGULAR</b>			
AL-0014	MALT EXTRACT FLV	N	BROWN, MALTY
AL-0015	WHISKY BOURBON FLV	NI	FUSEL-LIKE, WOODY
AL-0039	WHISKY FAINTY FLV	NI	FERMENTED, MOULDY
QL90232	WHISKY FLV	NI	FUSEL, MALTY
AL-0017	WHISKY GRAINY FLV	NI	CEREAL/GRAINS, WOODY
ID21640	WHISKY ID 21640 PREMIUM FLV	NI	FLORAL, HEAVY, FUSEL
AL-0018	WHISKY ORIENTAL FLV	NI	FRUITY, FUSEL-LIKE
AL-0019	WHISKY PHENOLIC FLV	NI	PHENOLIC, SMOKY
AL-0020	WHISKY SMOKE FLV	NI	SMOKY, WOODY
ID28542	WHISKY V 1044 FLV	A	PUNGENT, AROMATIC FUSEL, BURNT
<b>SCOTCH TYPE</b>			
ID25614	WHISKY ID 25614 FLV	NI	SCOTCH MATURED, MALTY, PHENOLIC,
AL-0021	WHISKY MALT FLV	NI	MALTY, FERMENTED
AL-0022	WHISKY SCOTCH FLV	NI	FERMENTED, MALTY
AL-0023	WHISKY SINGLE MALT FLV	N	SMOKY, WOODY OAKY MALTY
AL-0036	WINE MALT	N	AROMATIC
<b>SUPPORTING FLAVOURS</b>			
<b>CHARACTERISTIC FLAVOURS</b>			
ID25680	AGEING AGENT ID 25680 FLV	N	
AL-0025	FUSEL	NI	
ID20409	OAK EXTRACT ID 20409 FLV	N	OAKY, WOODY
ID26116	OAK EXTRACT ID 26116	NI	OAKY, WOODY
AL-0038	OAKWOOD BOURBON FLV	NI	WOODY, VANILLA, SMOKY
AL-0027	OAKWOOD CASK FLV	NI	WOODY, BURNT, SMOKY
AL-0041	PEAT CLASSIC FLV	NI	BURNT, PEAT WOODY
AL-0029	PEAT PREMIUM FLV	NI	BURNT, WOODY
PL-0099	CHOCOLATE DARK	NI	"BROWN, COCOAPLUM PUDDING CAKE"
PL-0091	VANILLA COLOURLESS	A	CARDBOARD, VANILLA
ID25701	VANILLA SPECIAL FLV	A	SLIGHTLY BROWN, VANILLIC



Product Code	Product Name	Legal Status	Profile
--------------	--------------	--------------	---------

**SUPPORTING FLAVOURS**

**FRUITS & DRY FRUITS**

📌 ID20898	DATE FLV	N	DRY FRUIT
📌 AL-0037	FIG FLV	A	SWEET, BROWN, FRUITY
📌 AL-0031	GRAPE COGNAC FLV	NI	FRUITY, SWEET, FLORAL
📌 AL-0032	PRUNE NATURAL FLV	N	"SWEET-BROWN, FRUITYDRY FRUIT"
📌 AL-0033	RAISIN JUICE EXT FLV	-	SWEET, BROWN, NAT. JUICE
📌 AL-0034	GRAPE COGNAC FLV	N	FRUITY, GRAPE

**FRUIT FLAVOURINGS**

📌 PL-0086	APPLE FLV	NI	
📌 PL-0007	BLACK CURRANT FLV	NI	
📌 PL-0088	GUAVA FLV	A	
📌 PL-0089	LEMON FLV	N	
ID-28504	LEMON LIME V5805	NI	
📌 PL-0090	LYCHEE FLV	NI	
PL-0047	MANGO FLV	NI	
📌 PL-0062	ORANGE (NAGPUR) FLV	N	
📌 PL-0065	ORANGE JUICY	N	
PL-0112	PINEAPPLE FRESH FLV	A	
📌 PL-0113	STRAWBERRY FANTASY	NI	
📌 PL-0092	RASPBERRY FLV	NI	

Signatures

📌 New Introduction

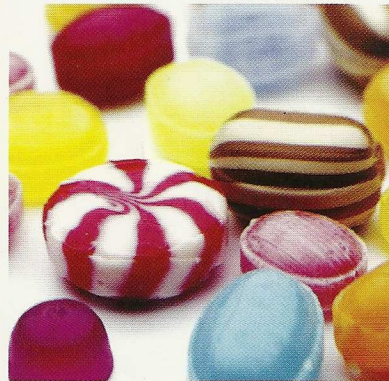
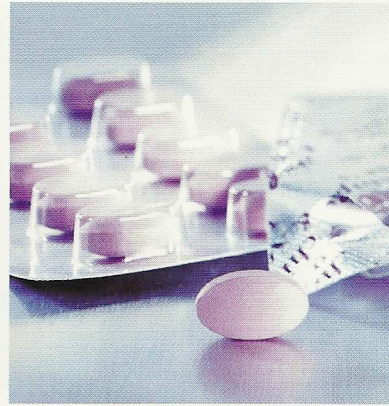
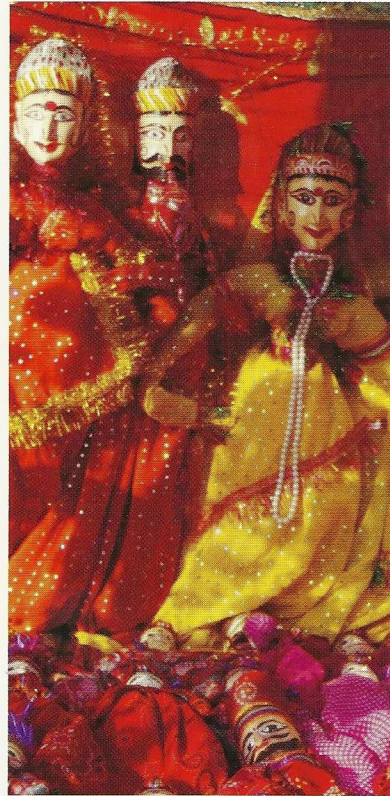


Givaudan<sup>®</sup>

# Powder Flavours

Product Code	Product Name	Legal Status	End Use
DC50129	AMERICAN ICECREAM DC 129 PH	NI	DAIRY, PHAR
DC50104	BANANA DC 104 PH	A	PHAR
👉 S-060720	BANANA FLV ULTRASEAL 151	NI	BEV, DAIRY, PHAR
DC50112	CARDAMOM DC 112 PH	NI	BAK, DAIRY, PHAR
Q-031703	CHOCOLATE FUDGE ULTRASEAL 151	NI	BEV
DC50124	COCOA DC 124 PH	A	DAIRY, PHAR
DC50113	COCONUT DC 113 PH	A	BAK, DAIRY, PHAR
DC50130	FRUIT FLAV. DC 130 PH	A	PHAR
👉 S-076927	FRUIT (MIXED) FLV ULTRASEAL 151	NI	PHAR
DC50101	LEMON DC 101 PH	NI	BEV, PHAR
👉 P-093036	LEMON FLV	NI	BEV
👉 P-076127	NIMBU PANI	NI	BEV
DC50217	MANGO DC 217 PH	A	DAIRY, PHAR
👉 S-089864	MILK FLV ULTRASEAL 151	NI	DAIRY
QF07873	MILK MASALA DCS 50525	NI	DAIRY, PHAR
DC50100	ORANGE DC 100 PH	N	BEV, DAIRY, PHAR
DC50116	ORANGE DC 116 PH	N	BEV, DAIRY, PHAR
👉 Q-042065	ORANGE ULTRASEAL 151	NI	BEV
DC50117	PEPPERMINT DC 117 PH	NI	PHAR
👉 S-099480	PEPPERMINT FLV ULTRASEAL 151	N	PHAR
DC50106	PINEAPPLE DC 106 PH	A	BEV, PHAR
👉 S-072877	PINEAPPLE FLV ULTRASEAL 151	NI	BEV, PHAR
DC50107	RASPBERRY DC 107 PH	A	PHAR
DC50109	STRAWBERRY DC 109 PH	A	BEV, DAIRY, PHAR
DT00309	STRAWBERRY DCS 309 PH	NI	BEV, DAIRY, PHAR
👉 S-043692	STRAWBERRY NICE ULTRASEAL 151	NI	BEV
👉 N-036230	VANILLA CREAMY FLV EVERFRESH 101	NI	BEV
👉 P-071366	VANILLA CUSTARD POWDER FLV	NI	BAK, BEV, CONF
DC50110	VANILLA DC 110 PH	A	DAIRY, PHAR





Givaudan<sup>®</sup>